

Early Childhood, Education, Transition, and Community Programs  
Human Development Center

Service Title	Description of Service	Methods	Duration	Population	Participant Max	Cost
Comprehensive District Package: Building Capacity	Action plan development, customized professional learning events, facilitated monthly team meetings, job-embedded coaching sessions, end of year data review, online resources, and unlimited access to a LASARD facilitator	<input checked="" type="checkbox"/> Virtual <input checked="" type="checkbox"/> f2f <input checked="" type="checkbox"/> Hybrid	School Year	<input checked="" type="checkbox"/> Students w/ disabilities <input type="checkbox"/> English Learners	Determined by number of coaching sessions selected	\$55,000+
School Support Package: Unlocking the Key to School Success	Team action planning session, customized professional learning events, facilitation of monthly team meetings, job-embedded coaching sessions, and online resources.	<input checked="" type="checkbox"/> Virtual <input checked="" type="checkbox"/> f2f <input checked="" type="checkbox"/> Hybrid	School Year	<input checked="" type="checkbox"/> Students w/ disabilities <input type="checkbox"/> English Learners	Determined by number of coaching sessions selected	\$55,000+
Communities of Practice (CoP): Conversations that Lead to Solutions	Engage groups of educators with similar needs in continuous learning. Each CoP session will consist of a short content presentation and a solution focused case study component.	<input checked="" type="checkbox"/> Virtual <input type="checkbox"/> f2f <input type="checkbox"/> Hybrid	Six 1-hour sessions	<input checked="" type="checkbox"/> Students w/ disabilities <input type="checkbox"/> English Learners	15	\$5,000
Build Your Own Customized Package	Choose services that will best meet the needs of your school or system. You can add to the above packages or build your own customized package.	<input checked="" type="checkbox"/> Virtual <input checked="" type="checkbox"/> f2f <input checked="" type="checkbox"/> Hybrid	Six 1-hour sessions	<input checked="" type="checkbox"/> Students w/ disabilities <input type="checkbox"/> English Learners	Determined by number of coaching sessions selected	Based on services chosen

**Primary Contact: Ali Kowitz, M.Ed. akowit@lsuhsc.edu**

Keep scrolling to learn more about our services!





Get to know  
Education, Transition,  
and Community Services  
at the LSUHSC

# Human Development Center

---

# About the Human Development Center

---

HDC has several programs that build the capacity of professionals, service providers, and families to ensure that people with disabilities are able to participate fully in all aspects of community life.

Our programs include:

- Early Head Start Child Care Partnership (EHS-CCP)
- Early Learning Center
- Employment First Trainings
- West South Central Work Incentives Planning and Assistance (WSC WIPA)
- LEND Training Program
- Interprofessional Preparation of Related Service Personnel

By working with HDC, you partner with these programs:

- Inclusive Practices in Early Childhood (IPEC)
- Louisiana Autism Spectrum and Related Disabilities Project (LASARD)
- Louisiana DeafBlind Project for Children and Youth (LADBP)
- Postsecondary Apprenticeship for Youth (PAY Check)



# We're from Louisiana

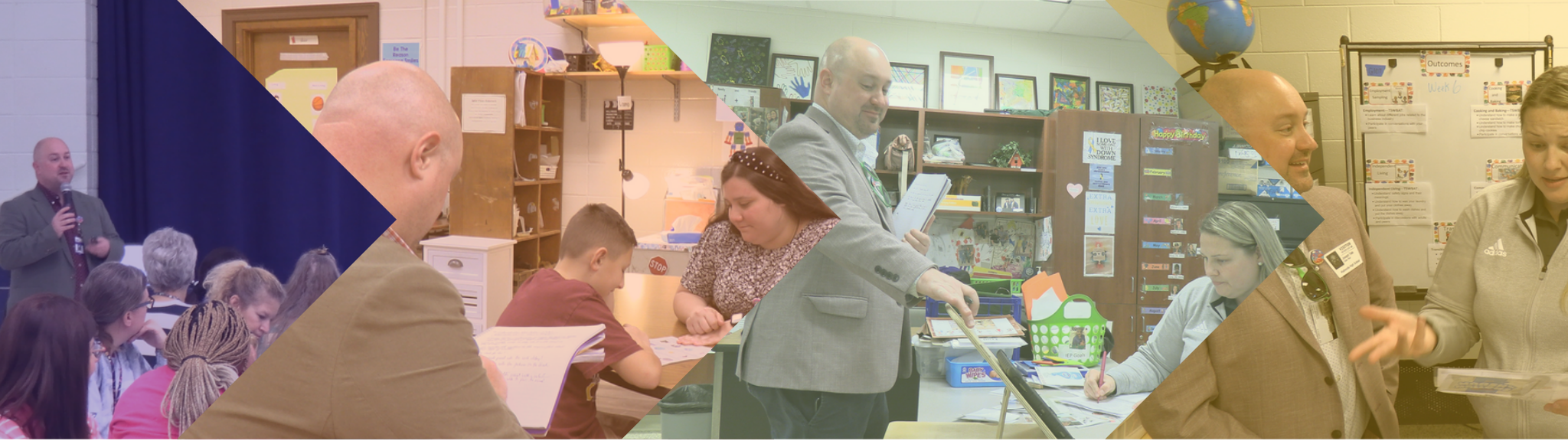
---

As the images of our LASARD team represent, we live in the communities we work in.

The **Human Development Center** is Louisiana's only **University Center of Excellence in Developmental Disabilities**.

Our main office is based at the LSU Health Sciences Center in New Orleans.





# We come to **You**

---

We pair our training sessions with in-person, job-embedded coaching to support the implementation of evidence-based practices covered in our trainings.

*In-Person*  
Observation

*In-Person*  
Modeling

*In-Person*  
+ Feedback

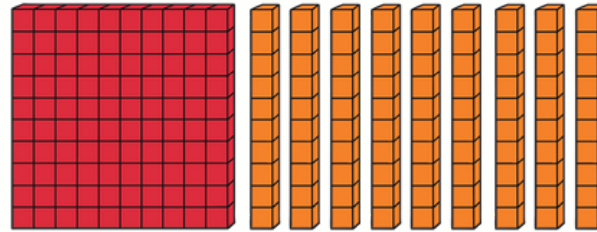
---

*HDC's*  
Job-Embedded  
Coaching

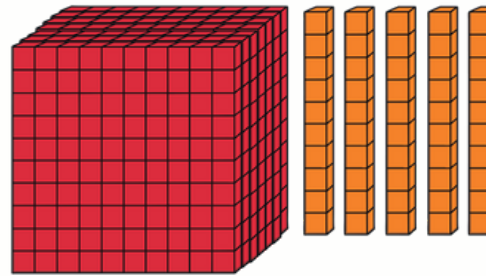
# We make an **impact**

In the 2022-23 school year, LASARD provided training to more than 1100 educators and coached more than 300 educators across 30 districts in Louisiana.

**We provided Professional Development to...**

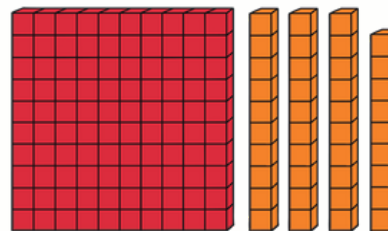


**190**  
Schools

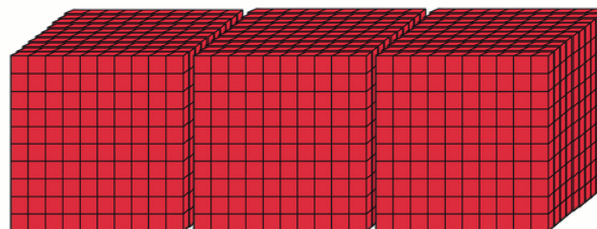


**750**  
Teachers

**We also provided...**



**139**  
Training  
Sessions



**3000+**  
Educators





# Our goal is **inclusion**

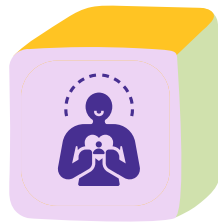
---

We believe **ALL** students can succeed in inclusive classrooms.

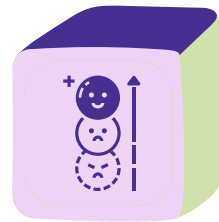
We believe that inclusion helps all students gain skills in:



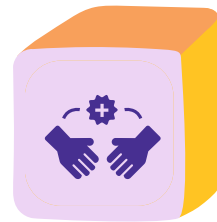
**EMPATHY**



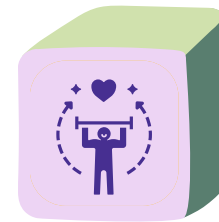
**ACCEPTANCE**



**BEHAVIOR  
MANAGEMENT**



**FRIENDSHIP**



**POSITIVE  
SELF-IMAGE**

The Human Development Center builds the capacity for inclusion through evidence-based practices at the school and district level.

Our relationships with educators, related services providers, and families create positive outcomes with the shared aim for inclusion.



# We strive for success **beyond the classroom**

---

By partnering with the Human Development Center, you partner with a team of employment support professionals committed to a successful transition from high school to adult life.

We coach district teams and teachers to develop:

- ✓ Individualized, comprehensive transition planning
- ✓ Job-training through paid internships in integrated environments
- ✓ Employer partnerships in your area
- ✓ On-site job coaching
- ✓ Monitoring of students' transition

We can support the development of a Postsecondary Apprenticeship for Youth (PAY Check) program in your district. PAY Check is a 3 semester program where students participate in courses at a post-secondary institution, learn community and work-related skills, and gain employment experience through two 10-week paid internships.



# Sample Package

## Large-Size Parish District

**Total Price**

Approx. \$200,000

### Includes

40-50 Elementary Schools

25-30 Middle Schools

10-16 High Schools

### Goals

Build capacity of district level administration (systems-change for inclusion, new staff development and training, professional development of current leadership).

Develop and build capacity of diverse learner departments' coaches and instructional support staff.

Increase use of evidence-based practices across the district in general and diverse-learning settings.

### Services

Team Meetings

- Initial planning with district team
- District Administrative & Principal meetings
- Monthly district team meetings

Trainings

- 5 Basic PDs to build foundational knowledge
- 5 Customized PDs to meet district-specific needs
- Inclusion Series
- Para Training Series

Communities of Practice

- 3 Series (6 sessions each) done virtually

Coaching: 200 sessions

- Target 20 teachers and support with 10 coaching sessions each
- District team member joins on each visit
- Unlimited logins for online modules
- Unlimited phone/email consults with facilitator

# Sample Package

## Mid-Size Parish District

---

**Total Price**

Approx. \$115,000

### Includes

9 Elementary Schools

4 Middle Schools

2 High Schools

### Goal

Build capacity of district team members/coaches.

### Services

Team Meetings

- Initial planning with district team
- Principal meetings
- Monthly district team meetings

Trainings: 10 Basic PDs

- 9 on Overview of ASD to all school staff of 9 schools before school started
- 1 para training mid-year on Positive Behavior Strategies

Coaching: 100 sessions

- Target 10 teachers and support with 10 coaching sessions each.
- District team member joins on each visit.

Online Training

- 500 logins for online modules

# Sample Package

## Single School

---

### Total Price

Approx. \$17,500

### Includes

PreK-2 Elementary School

### Goals

Build skills of all educators to support students with disabilities

### Services

Team Meetings

- Initial planning with school team

Trainings: Two basic for all staff

- Overview of ASD
- Environmental Supports

Coaching: 15 sessions

- Focus on new special educators



## Contact **HDC**

---

Ali Kowitz, M.Ed.

akowit@lsuhsc.edu

Interim Director, Education Transition  
Community Initiatives

Director, LASARD Project



[www.hdc.lsuhs.edu](http://www.hdc.lsuhs.edu)



504 556 7500



411 S. Prieur St  
New Orleans, LA 70117